



FPU2000 & FPU3000 SERIES



FRONT PANEL UPGRADE

"Our Mass Notification Products Speak for Themselves™"

An economical way of updating your existing WPS Whelen products to the latest technology is by replacing the electronics.

Often the speaker array outlasts the electronics. Instead of replacing the entire station, replace just the electronics. All of the latest assembled and tested components are mounted on the swing-out panel and are ready to replace the existing panel. Easy installation at a fraction of the cost of a new product.

Front Panel 2000 Features

- Motherboard
- Power amplifiers with 4-100 watt output channels
- Battery charger
- ESC2030 electronic controller
- Pressure sensitive switch pad
- New harnesses

Front Panel 3000 Features

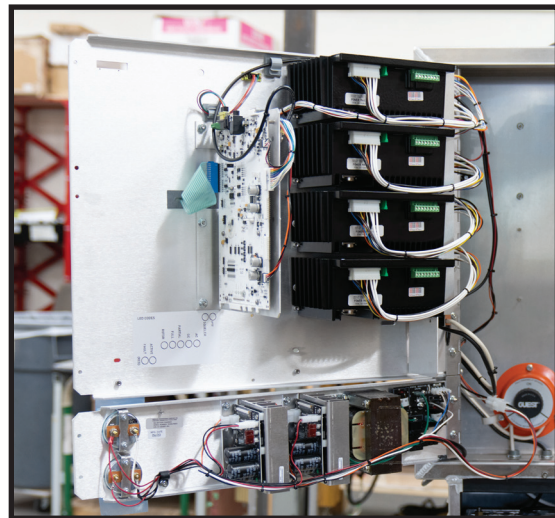
- One rotor control
- Motherboard
- Four Power amplifiers each with 4-100 watt output channels
- ESC2030 electronic controller
- Battery charger
- Pressure sensitive switch pad
- New harnesses

Front Panel 2000 Upgrade Models

- **FPU2004** - For Model WPS2004, one power amplifier with 4-100 watt output channels
- **FPU2008** - For Model WPS2008, two power amplifiers each with 4-100 watt output channels
- **FPU2012** - For Model WPS2012, three power amplifiers each with 4-100 watt output channels
- **FPU2016** - For Model WPS2016, four power amplifiers each with 4-100 watt output channels

Front Panel 3000 Upgrade Models

- **FPU3000** - For Model WPS3000, four power amplifiers each with 4-100 watt output channels




Factory quotation required for ALL Front Panel Upgrades. Cabinet, Batteries and switch not included.

Whelen Engineering Company
(860) 526-9504
www.whelenmassnotification.com

Whelen Engineering reserves the right to upgrade and improve products without notice. Printed in the U.S.A. MS13479A - 10/23

All products proudly designed, manufactured, and assembled in the U.S.A.
• ISO 9001 Registered QMS

 **WARNING:** This product may contain chemicals known to the State of California to cause cancer and birth defects or other reproductive harm. For more information, visit whelen.com/regulatory.

@WhelenENG

